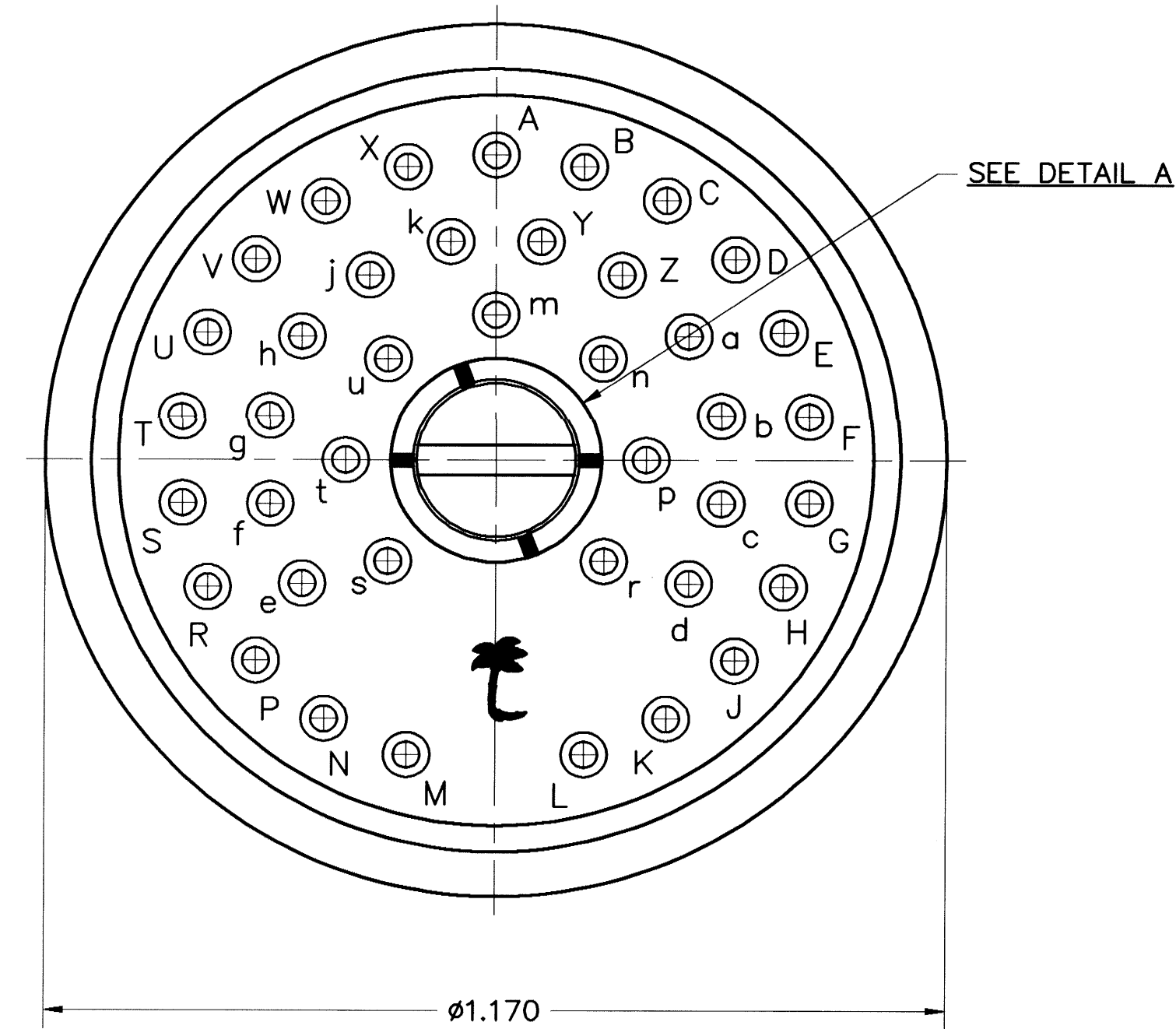
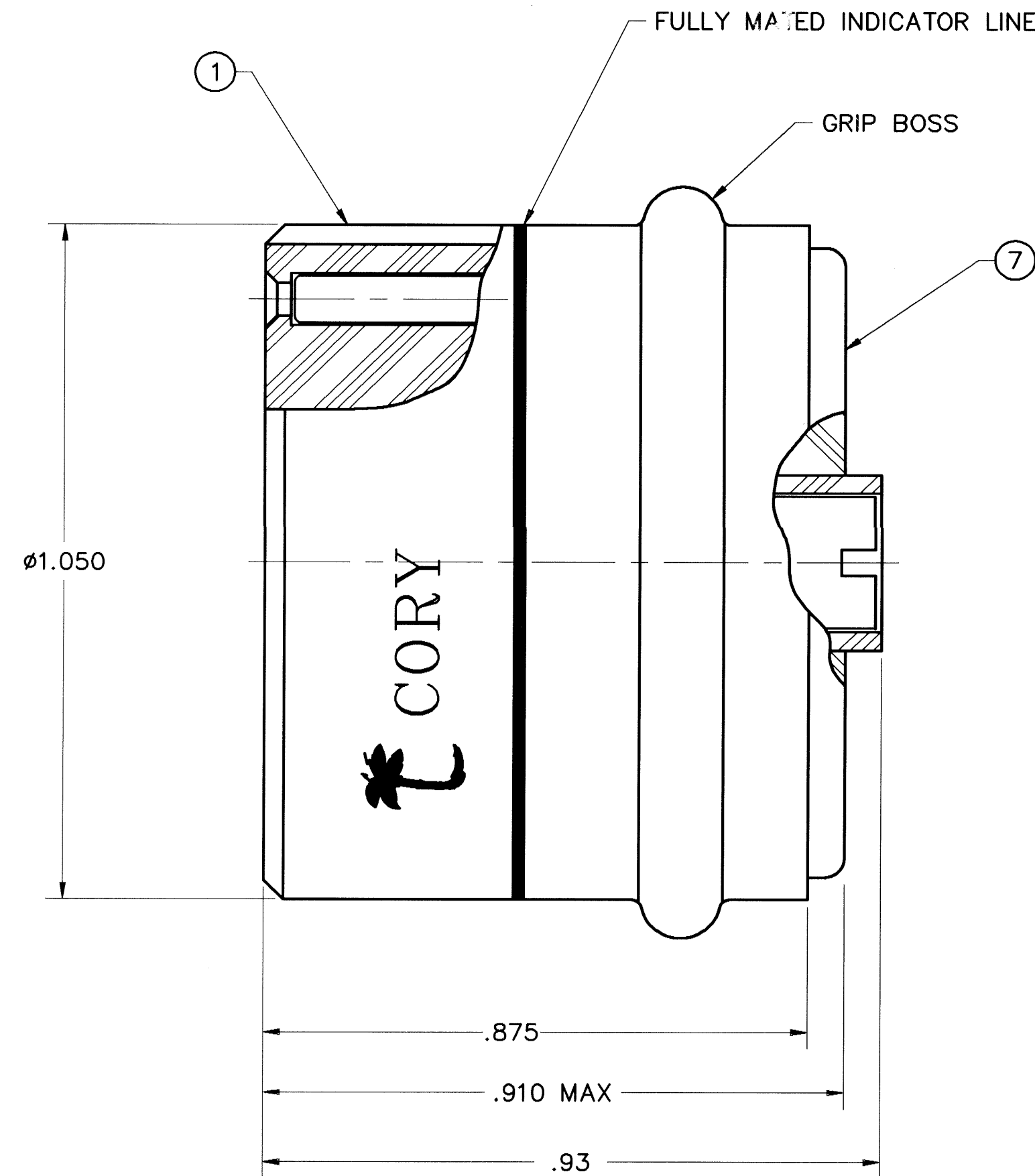
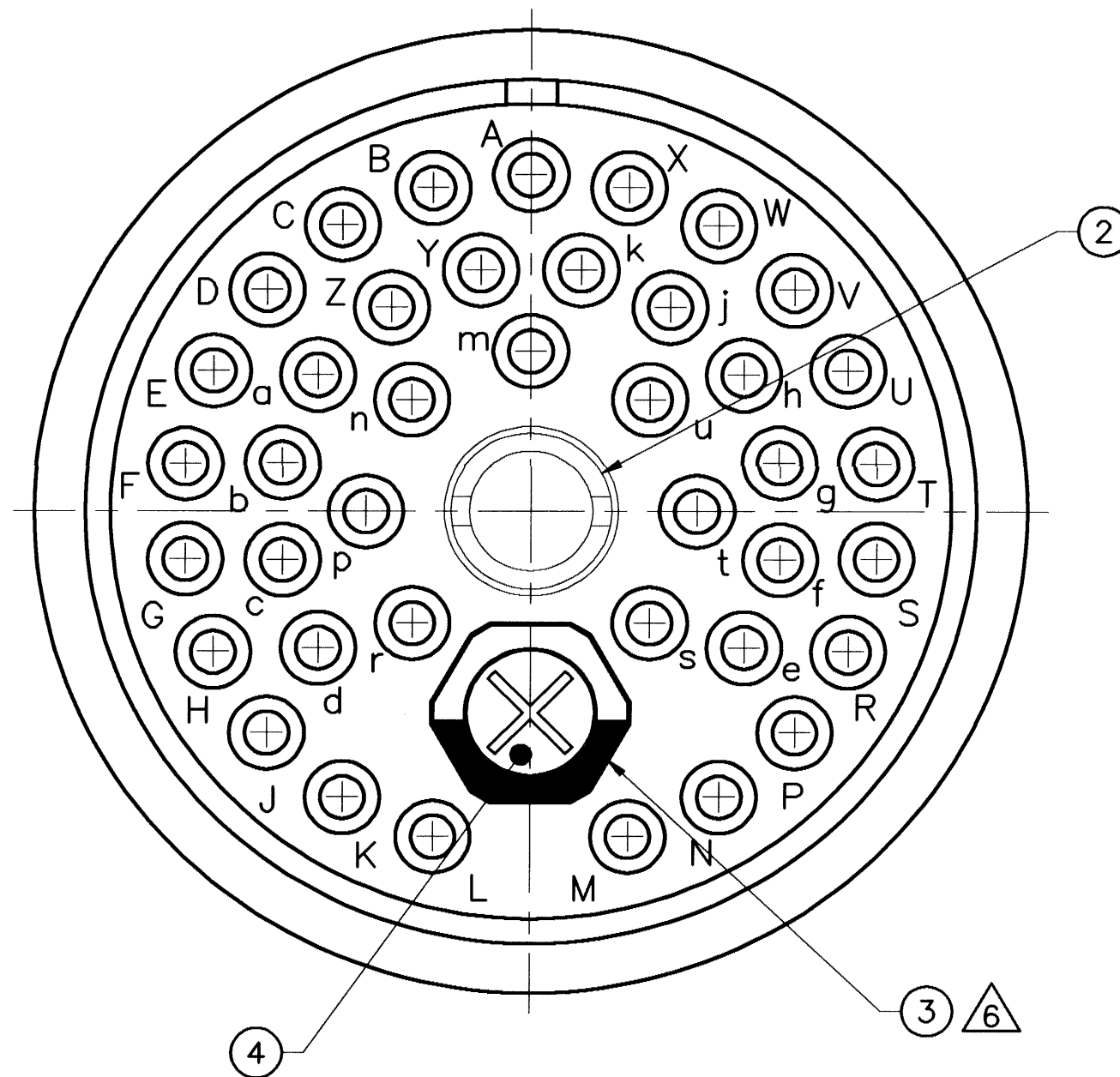


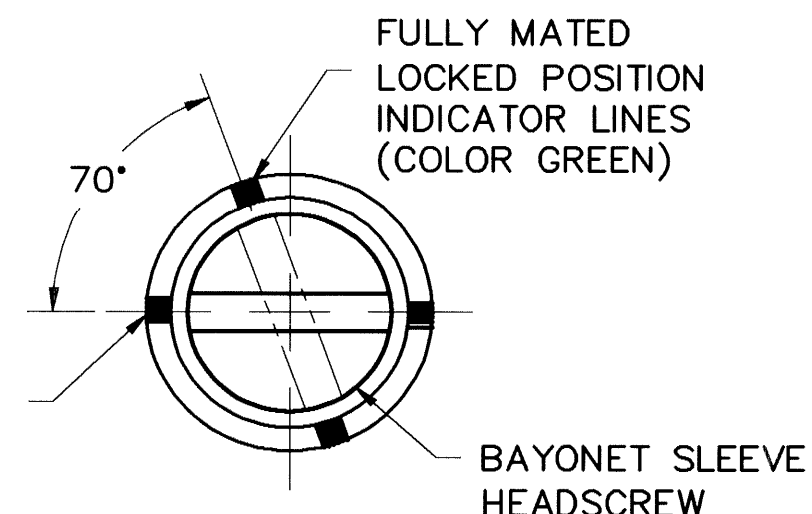
THIS DOCUMENT CONTAINS PROPRIETARY INFORMATION AND EXCEPT WITH WRITTEN PERMISSION OF CORY COMPONENTS, INC., SUCH INFORMATION SHALL NOT BE PUBLISHED, OR DISCLOSED TO OTHERS, OR USED FOR ANY PURPOSE, AND THE DOCUMENT SHALL NOT BE DUPLICATED IN WHOLE OR IN PART.

REVISIONS					
EO	REV	DESCRIPTION	DRAWN	DATE	APPD
1848	NC	NEW RELEASE	LBO	6/13/96	



POLARIZATION

1		
2		
3		
4		
5		
6		



BAYONET SLEEVE HEADSCREW SHALL BE ALIGNED TO RED LINES PRIOR TO MATING AND SHALL BE TURNED APPROX. 70° CLOCKWISE AND ALIGN TO GREEN LINES TO MATE AND LOCK TO POSITION.

UNLOCK POSITION FOR MATING INDICATOR LINES (COLOR RED)

DETAIL A

PART NUMBER EXPLANATION

CSLT-40P**

TERMINATION TYPE

A - CRIMP

POLARIZATION

(SEE TABLE)

CUSTOMER REFERENCE DRAWING

9. INSTALLING AND REMOVAL TOOL: M81969/1-02 (RED-INSTALLING; WHITE-REMOVAL).

8. MATES WITH CORY CSLT-40R* RECEPTACLE CONNECTOR.

7. ENGAGEMENT SEQUENCE: 1ST-KEYWAY, 2ND-POLARIZING & BAYONET LEAD POINT, 3RD-CONTACTS.

6. POLARIZING POST CAN BE POLARIZED IN SIX (6) DIFFERENT POSITIONS BY REMOVAL OF RETAINING SCREW FROM THE FRONT. POLARIZING POST IS POLARIZED TO POSITION -1 UPON SHIPMENT.

5. POLARIZING POST IS HERMAPHRODITIC, USED IN BOTH PLUG AND RECEPTACLE.

4. SHADED PORTION INDICATES EXTENDED PART OF POST.

3. CONTACTS MUST BE ORDERED SPARATELY REF. M39029/63-368 OR CORY CB005-5P (#20 SOCKET CONTACT WITH SIZE 18 CRIMP WELL).

2. PART MARKING - CORY LOGO, DATE CODE, FSCM No. (71771) AND PART NUMBER.

1. MATERIAL AND FINISH:
SHELL, PLUG - HIGH GRADE DIELECTRIC
BAYONET SLEEVE, POLARIZING POST & RET. SCREW - STAINLESS STEEL, PASSIVATED.
CONTACT CLIP - BERYLLIUM COPPER, HEAT TREATED
GROMMET - FLUOROSILICONE RUBBER

NOTES: (UNLESS OTHERWISE SPECIFIED)

ITEM NO.	PART OR IDENTIFYING NO.	NOMENCLATURE OR DESCRIPTION	QTY REQD	MATERIAL/FINISH
7		GROMMET	1	
6		CONTACT RET CLIP (NOT SHOWN)	40	
5		REAR INSULATOR (NOT SHOWN)	1	
4		POLARIZING POST RET. SCREW	1	
3		POLARIZING POST	1	
2		BAYONET SLEEVE	1	
1		PLUG SHELL	1	

PARTS LIST

ANGLES ± .30°	XX ± .03	XXX ± .010
MATERIAL:	1	
FINISH:	1	
NEXT ASSEMBLY	USED ON	APPLICATION

APPROVALS		DATE
DRAWN: L.B. ODUCA		6/13/96
CHECKED: F. M. ACOSTA		6/13/96
PROD. ENGR: L.B. ODUCA		6/13/96
APPROVED: F.M. ACOSTA Jr		6/13/96
REF:		

 2201 ROSECRANS AVE, EL SEGUNDO, CA 90245			
SWITCHBACK, PLUG, QUICK COUPLING			
SIZE	FSCM NO.	DWG NO.	REV.
D	71771	CSLT-40P**	NC
SCALE	5-CSLT40P		SHEET 1 OF 1

APPLICATION	USED ON

DO NOT SCALE DRAWING